

# MONTHLY MEMBERSHIP PROGRESS REPORT

District 201N3

Results as of: 6/30/2020

GMT:

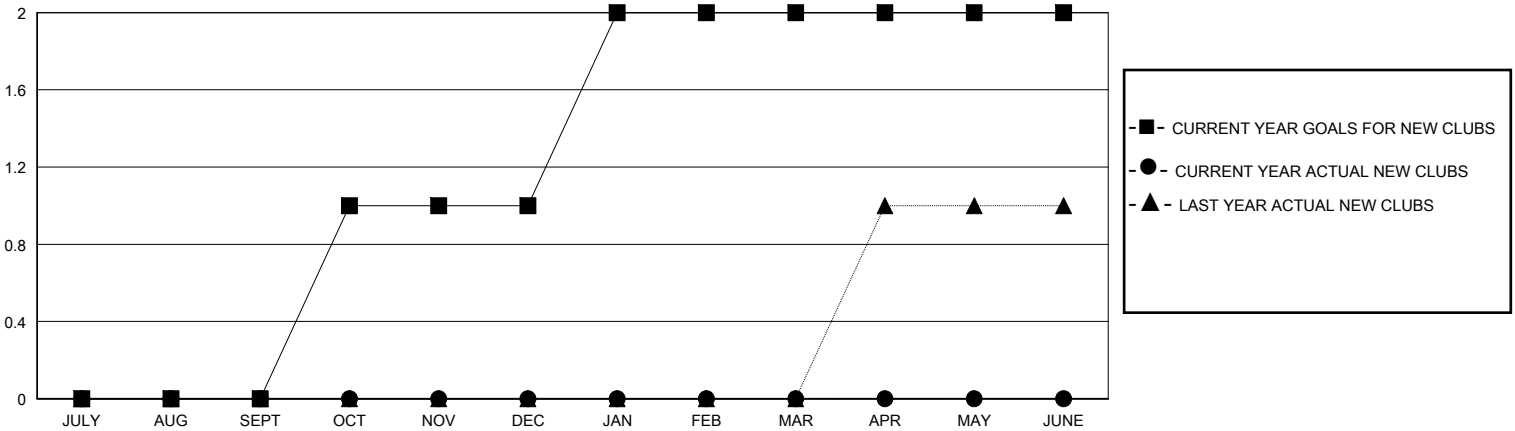
LOCATION AUSTRALIA

GMT CA

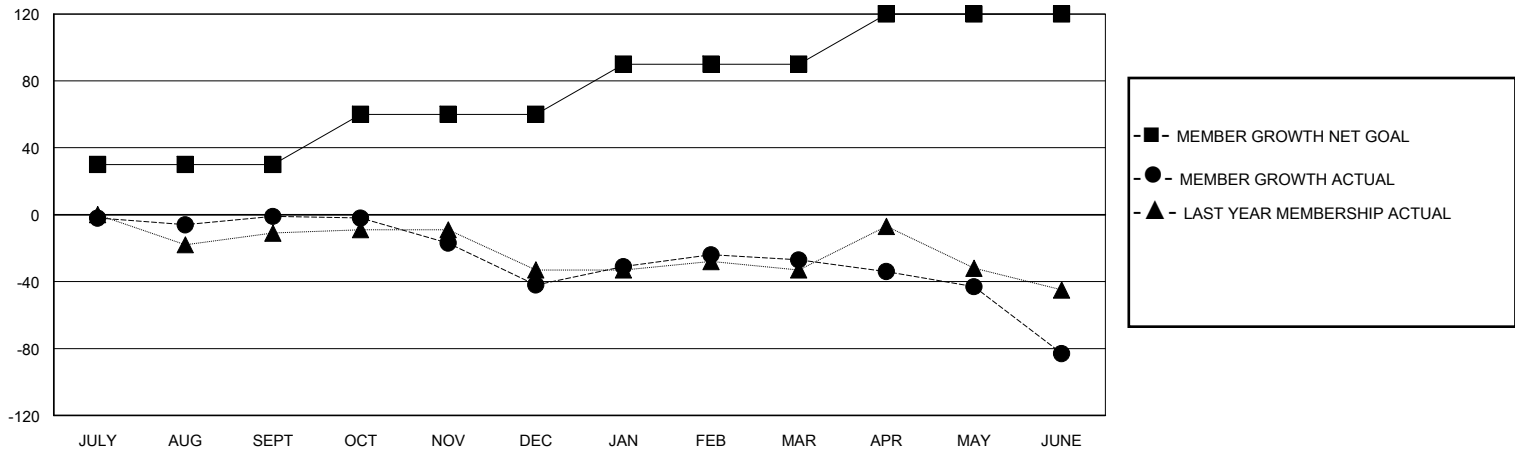
Clubs			
RESULTS FOR 2019-2020			
QUARTER	NEW CLUB GOAL	NEW CLUBS	DROPPED CLUBS
JULY/AUG/SEPT	0	0	0
OCT/NOV/DEC	1	0	0
JAN/FEB/MAR	1	0	1
APR/MAY/JUNE	0	0	0

Members			
RESULTS FOR 2019-2020			
QUARTER	MEMBER GROWTH NET GOAL	MEMBER GROWTH ACTUAL	DROPPED MEMBERS ACTUAL (including transfers)
JULY/AUG/SEPT	30	37	34
OCT/NOV/DEC	30	26	56
JAN/FEB/MAR	30	42	22
APR/MAY/JUNE	30	18	68

GOALS AND ACTUAL NEW CLUBS CUMULATIVE



GOALS AND ACTUAL MEMBERS CUMULATIVE



DROPPED CLUBS: 1

35 CLUBS OF 55 ADDED 1 OR MORE NEW MEMBERS

GENDER DISTRIBUTION

MALE 670 (60.04%)  
FEMALE 446 (39.96%)

DROPPED MEMBERS

DECEASED	20
CLUB CANCELLED	0
OTHER	160
<b>TOTAL</b>	<b>180</b>

[CLICK HERE FOR CUMULATIVE MEMBERSHIP DATA](#)

TOTAL FAMILY UNIT MEMBERS	186
FAMILY MEMBERS PAYING HALF DUES	95